

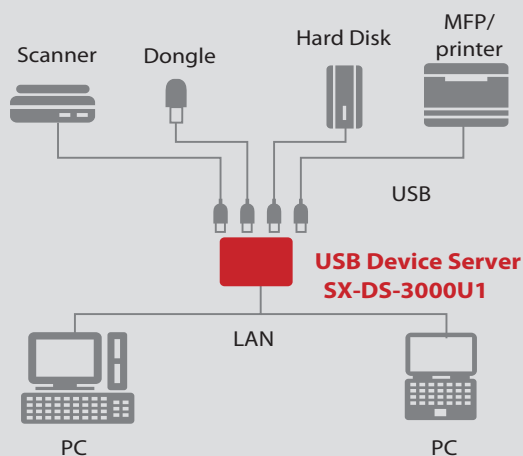
# Fast Ethernet USB Device Server SX-DS-3000U1



## Networking of USB devices

The silex SX-DS-3000U1 is a USB-Device-Server to easily connect and share USB devices on a network. Based on silex' USB IP technology "Virtual Link", the SX-DS-3000U1 delivers smooth network connectivity to your USB devices. It ensures full compatibility with a large variety of USB devices and software. Popular applications include USB Printers and Multi-function Printers (including GDI), USB software protection dongles, card reader and storage devices. The SX-DS-3000U1 is a cost effective, user friendly USB Device Server with reliable quality.

### Connection example



### Features

#### USB Hub support

By using an optional USB-Hub several USB devices can be connected simultaneously. The max. no. of USB devices on the SX-DS-3000U1 is 7, subject to overhead data traffic of the USB devices.

#### Print Server Function

Supports standard TCP/IP printing (LPR/IPP/RAW)

The product supports the general RAW-mode, LPR-mode and IPP-mode network printing protocols. When the product is connected to a printer, the standard Windows print function can be used to print.

#### Function for automatic printer connection

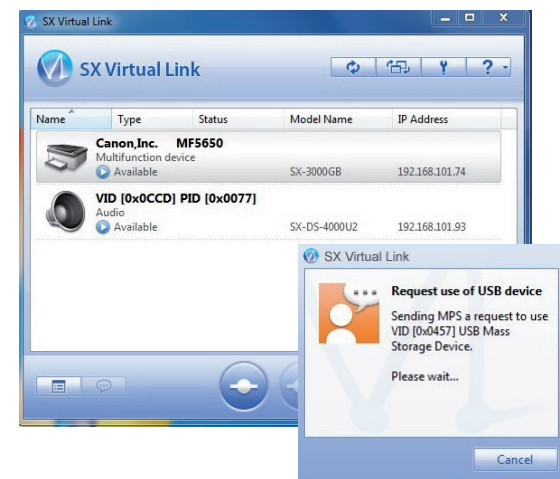
By setting up this function using SX Virtual Link, a print job is automatically detected for a configured printer: The connection to the printer is established, the print process is executed and the connection is disconnected again. The print server is ready for the next print job from another user. Thus the device server function simultaneously includes a print server function that is also suitable for GDI printers.

### What is a USB Device Server?

It is a network device that uses the USB Virtual Link technology to make USB devices network-ready. Thanks to the USB Virtual Link technology from silex technology, a variety of USB devices can be used on a network, just as though they were connected with a USB cable.

### What is SX Virtual Link?

SX Virtual Link is a software application for the use of the USB Virtual Link technology. With SX Virtual Link, the computer can establish a remote connection over the network to any USB device connected to the USB device server.



The network is searched for the product and the connected USB devices; the search results are displayed in an overview on the main screen.

If another user is using a shared USB device, a request for use can be sent. It can also be specified that failure to respond to this request will automatically lead to a disconnection after a timeout.

## Features, continued

With the SX-DS-3000U1, you can connect a variety of USB devices over the network, like USB dongles, MP3 players, CD/DVD/Zip drives, USB drives and other storage media, scanners, printers, digital cameras, USB sound cards, USB LCD monitors, telescopes, mixing consoles, and many more. The profitability of USB devices is increased by their availability as network resources.

**Virtual environments:** The SX-DS-3000U1 is compatible with the following virtualisation programs and environments: VMware, Citrix, Microsoft Terminal Server, and Hyper-V.

**No special drivers of applications** are needed to use the USB devices: The drivers and applications that worked locally will continue to work.

**For manufacturers:** silex technology offers manufacturers the USB Virtual Link technology as an OEM product. On the hardware side there is an installation module and on the software there are two powerful SDK systems available to integrate the mature USB Virtual Link technology into any product, such as routers, access points, NAS systems or home gateways.



1 USB port – with a total of 1000mA of power supply



Fast Ethernet connection, reset button, power connection

## Other USB Device Servers

Devices such as printers, scanners, multifunction printers, storage devices are connected over the network.

### USB Device Server with Gigabit support SX-3000GB



- 10 BASE-T/100 BASE-TX/1000 BASE-T (automatic detection)
- 2x USB 2.0 Hi-Speed-(type A)-Ports
- Processor power of 250 MHz
- Print server function:  
Supports standard TCP/IP printing (LPR/IPP/RAW)

Win Mac

### USB Device Server with up to 300Mbit WLAN in 2.4 and 5 GHz bands SX-DS-3000WAN



- 10 BASE-T/100 BASE-TX/1000 BASE-T (automatic detection)
- 2x USB 2.0 Hi-Speed
- Number of USB connections that can be managed: up to 15
- Supports WPS
- Print server function:  
Supports standard TCP/IP printing (LPR/IPP/RAW)

Win Mac

## Technical data

Product name	SX-DS-3000U1
Article number	E1258
Network interface	10 BASE-T/100 BASE-TX(automatic detection)
Device interface	USB 2.0 HiSpeed (type A) port x 1 with a total of 1A of power supply
Protocols supports	TCP/IP
Operating systems supported	Windows 7 (32/64bit), Vista (32/64bit), XP, 2000, Windows Server 2008 (32/64bit), Windows Server 2003 (32/64bit). * MacOS X [ PowerPC : Ver 10.3x ~ Ver 10.5x Intel : Ver 10.4.4 ~ Ver 10.8.x ] *
Configuration	Setup program, Web browser, telnet
Dimensions	B: 60 mm x T: 100 mm x H: 28 mm (without rubber feet)
Weight	100 g
Power supply	Power supply 220 V AC, 50/60 Hz
Maximum power consumption	3 W (12 VDC) without USB bus power supply *1
Contents of package	Main unit, power supply, CD-ROM (setup program, user manual), setup instructions
Approvals	VCCI class B / FCC class B / CE class B

\*1 When using USB devices with separate power supplies, we recommend the use of the power supply for stable operation.

\* The current technical data can be found on our web site at [www.silexeurope.com](http://www.silexeurope.com).

## Fast-Ethernet USB Device Server



SX-DS-3000U1

## About silex

Since 2000, silex technology europe GmbH has been a subsidiary of the Japanese company silex technology, Inc. The parent company in Japan has been involved in development and production since 1973. Thus silex technology can look back on nearly 40 years of experience and quality work. In addition to the central company headquarters in Kyoto, there are locations in Tokyo, the USA, China and Europe.

Today, the silex group is not only a world market leader in integrated network printing technology, but also a leading supplier of connectivity in the areas of USB, serial and WLAN. Many well-known manufacturers of computer peripherals rely on the technologies of silex technology and use them as OEM suppliers for their own products.

Their product line includes print, USB and serial device servers, as well as modular WLAN solutions. In addition to mature technologies and quality products, the company also offers a complete ranges of services, such as lifetime free support by telephone, email or remote access for all customers.

silex technology is a registered trademark of silex technology, Inc. Other products or trade names are the registered trademarks of their owners. Changes to technical specifications and data may be made with no prior notice. © 2011 silex technology europe GmbH. All rights retained.



ISO 9001  
JQA-QM3557  
silex technology, Inc.



ISO 14001  
JQA-EM3813  
silex technology, Inc.  
Design & Manufaktur Center

## Global marketing and support locations:

**Europe**  
silex technology europe GmbH  
+49-2151-65009-10  
Toll-free hotline in Germany:  
0800-7453938  
[www.silexeurope.com](http://www.silexeurope.com)  
> [contact@silexeurope.com](mailto:contact@silexeurope.com)

**Japan**  
silex technology, Inc.  
+81-774-98-3782  
[www.silex.jp](http://www.silex.jp)  
> [support@silex.jp](mailto:support@silex.jp)

**USA**  
silex technology america, Inc.  
+1-801-747-0656  
Kostenfreie Hotline USA:  
866-765-8761  
[www.silexamerica.com](http://www.silexamerica.com)  
> [contact@silexamerica.com](mailto:contact@silexamerica.com)

**China**  
silex technology beijing, Inc.  
+86-10-8497-1430  
[www.silex.com.cn](http://www.silex.com.cn)  
> [contact@silex.com.cn](mailto:contact@silex.com.cn)