

Wireless/Wired USB Hi-Speed 11g Print Server Canon C-6700WG

Ideal for

Canon
PIXMA
Ink-Jet

Canon
imageCLASS
CAPT Laser printers

Canon
PIXMA
Multi-Function printers



Ideal for sharing Canon Multi-Function and USB printers

The C-6700WG provides convenience and flexibility to share your Canon Multi-Function and USB printer on a Wireless or Wired Local Area Network.

Like the rest of silex's C-Series products, the C-6700WG is developed in close association with Canon.

Enjoy all functions of your Canon printers over the network - as if they were locally connected.



Key features

- ⊙ Printing, scanning, memory card storing and PC fax over a Wireless Local Area Network or LAN
- ⊙ Compatible with most Canon Multi-Function and USB printers
- ⊙ Easy wireless configuration with Windows® Connect Now support
- ⊙ Canon printer status monitoring support

10/100 BASE-TX	WPA-PSK (TKIP/AES)	Bi-directional Communication with printer	USB Memory Stick config.
MFP/AIO-Server	Print Server	Scanner Server	Storage Server
1 USB-Port	Multi-language Support	Canon Status Monitor	USB 2.0 Hi-Speed
WEP & SSID	WEP & SSID	IPP Internet Printing Protocol	IEEE 802.11 b/g Wireless
IP Filtering Enhanced Security			

Ideal for sharing Canon Multi-Function and USB printers

Features and benefits

Convert your Canon MFP and printers to a shared network resource

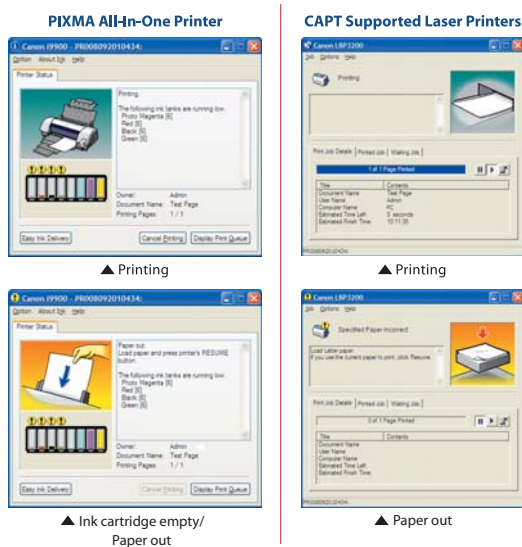
With the C-6700WG, you can remotely share a Canon USB MFP/printer over the network while at home with your family members or at the office with co-workers.

Network printing, scanning, memory card sharing and PC fax.

The C-6700WG provides easy wireless network access with full functionalities of the compatible Canon device.

Real-time Canon printer status monitoring support

The convenience of the Canon status monitoring function is available on the network as if it was locally connected to your PC. You can remotely monitor various defined printer operating conditions such as ink levels and paper empty on a real-time basis.



Easy wireless configuration with Microsoft Windows Connect Now*

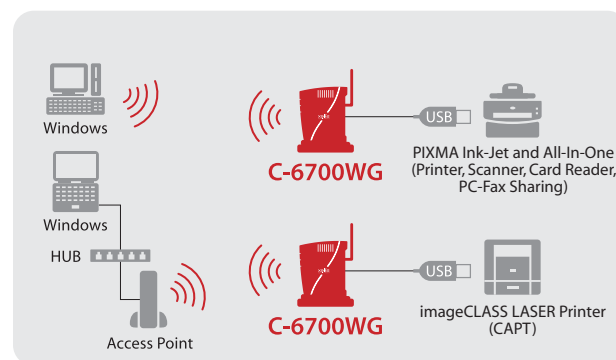
The C-6700WG supports Microsoft Windows Connect Now. It simplifies the complicated wireless network initial configuration. The process is very easy. Use the Windows XP Connect Now wizard, save the results on your USB flash thumb drive, and then insert the thumb drive to the C-6700WG. It automatically creates the wireless configuration instantly. Alternatively, the C-6700WG can be configured over a wired LAN connection.

* Supported only with Windows XP Service Pack 2 or greater

Advanced Wireless Security Support

64/128 WEP is supported as well as WPA-PSK (TKIP/AES) to securely print, scan or store your data over the wireless network.

Network diagramm



Specifications

Wireless LAN	IEEE 802.11b/g
Wireless Security	WEP (64/128bit), SSID, WPA-PSK (TKIP/AES)
Wired LAN	10Base-T, 100Base-TX (Auto Sense)
USB Interface	USB2.0 Hi-Speed (A type) x 1
Operating Systems*	Windows 95/98/Me, Windows 2000/XP, Windows Server 2003
Supported Protocols	TCP/IP
Configuration	Setup Utility, Web Setup, TELNET, Windows Connect Now
Outer Dimensions	W: 36mm x D: 114mm x H: 138mm W: 1.42 x D: 4.49 x H: 5.43 in (Antenna and Stand not included)
Weight	172g / 5.55 oz (Antenna and Stand not included)
Power	AC Power Adapter, AC100-240V 50/60Hz
Power Consumption	Max 9W (DC5V 1.8A)
Content	C-6700WG, AC Power Adapter, CD-ROM (Setup Utility, Manual) Setup Guide, Warranty Card, Stand, Antenna

* Network scanning, memory card reading and PC-Fax are available only for Windows 2000/XP.

Utility Software

Device Server Setup	Wizard style quick setup utility
CX Print	Client Software for Windows Printing
SX Virtual Link	For networking USB devices



JQA-QMA2667
sillex technology, Inc.



JQA-EM3813
sillex technology, Inc.
Design & Manufacture Center

Canon® is a registered trademark of Canon Inc. Other brand or product names are registered trademarks or trademarks of their respective owners. Technical information and specifications are subject to change without notice. © 2006 sillex technology, Inc. All rights reserved.

sillex global sales & support locations



Europe Office
sillex technology europe GmbH
+49-2159-67500
German toll free 0800-7453938
www.sillexeurope.de
contact@sillexeurope.de

US Office
sillex technology america, Inc.
+1-801-748-1199
US toll free 866-765-8761
www.sillexamerica.com
contact@sillexamerica.com

China Office
sillex technology beijing, Inc.
+86-10-6440-3958
www.sillex.com.cn
contact@sillex.com.cn

Corporate Headquarters
sillex technology, Inc.
+81-6-6730-3751
www.sillex.jp
support@sillex.jp